

APPARTEMENTS



situation 1:1000



élévation Est 1:1000

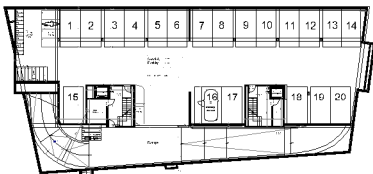
Appartement
4 pièces

A06

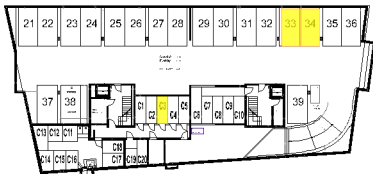
Rez
cave

PPE Pondérée = 117 m²

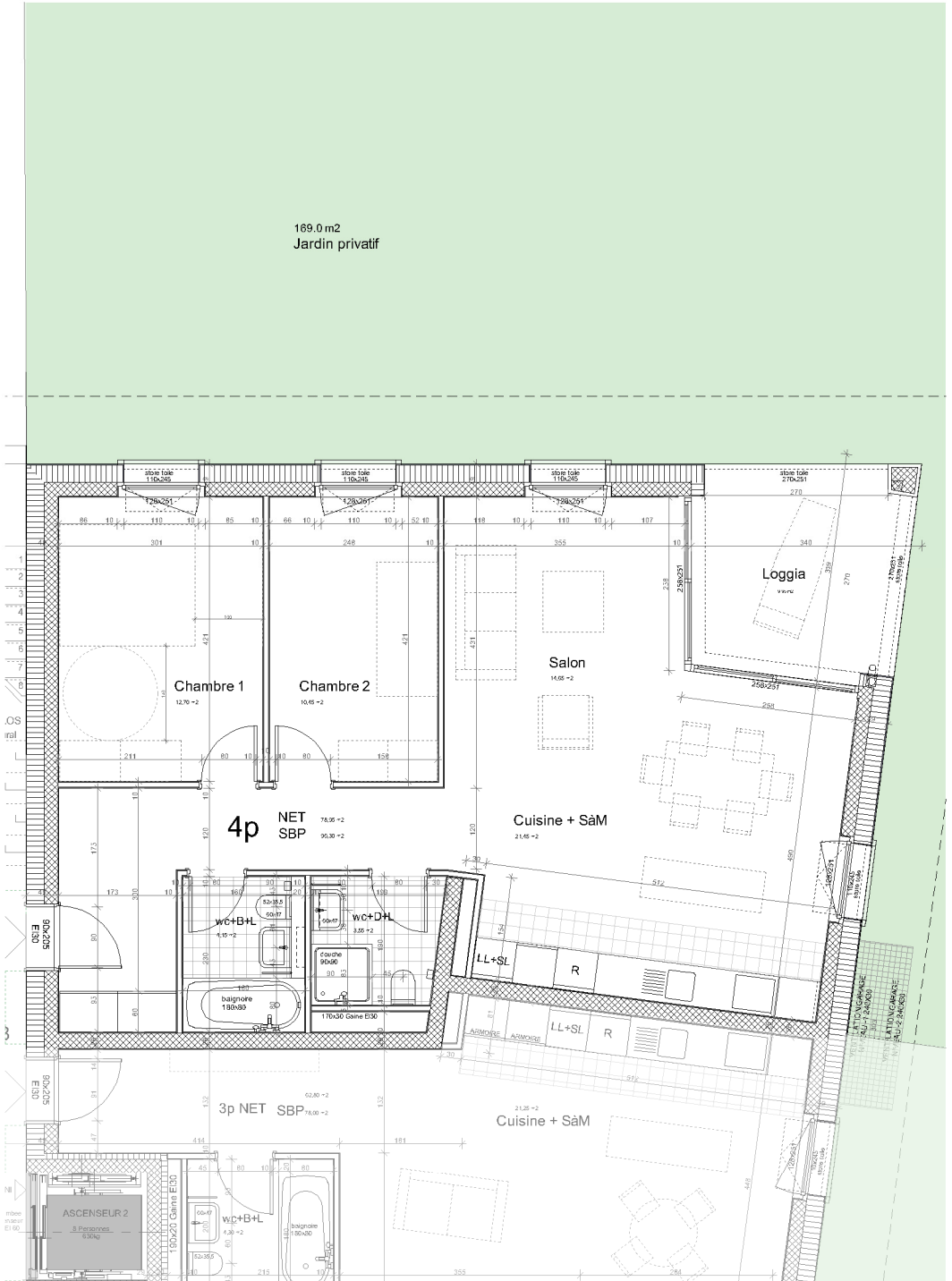
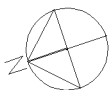
Localisation	Surfaces
Communautaire	36.10 m ²
Chambre 1	12.70 m ²
Chambre 2	10.45 m ²
Loggia	10.00 m ²
Jardin	169.00 m ²
Parking Cave	No 33-34 SS-2 No C03 5.15 m ²



1er sous-sol 1:1000



2ème sous-sol 1:1000



rez