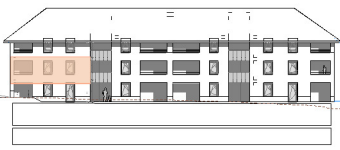


APPARTEMENTS



situation 1:1000



élévation Ouest 1:1000

Appartement
3 pièces

A11

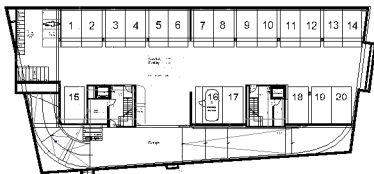
Rez
cave

PPE Pondérée = 80 m²

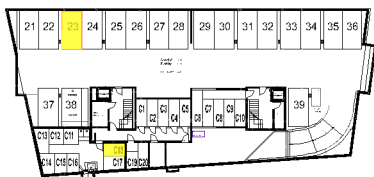
Localisation Surfaces

Communautaire	36.60 m ²
Chambre 1	12.55 m ²
Loggia	8.95 m ²

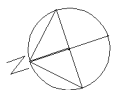
Parking Cave	No 23	SS-2
	No C'18	4.50 m ²



1er sous-sol 1:1000

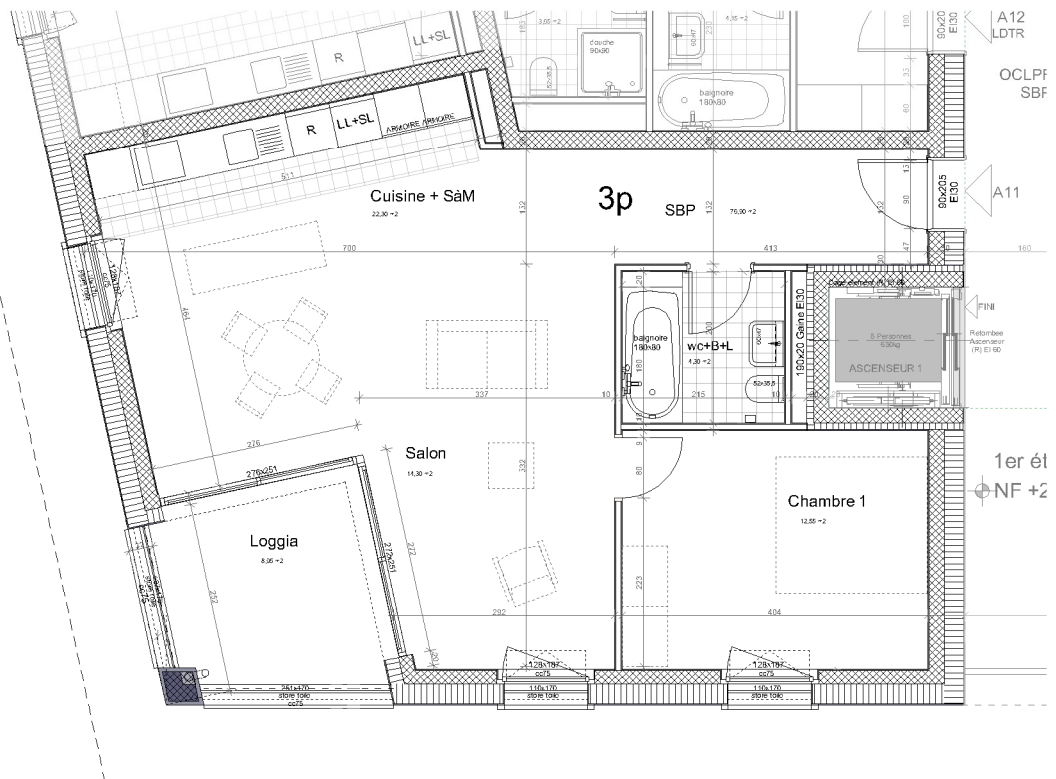


2ème sous-sol 1:1000



0 1 2 3 4 5

Echelle en mètres



1er