

APPARTEMENTS



situation 1:1000



élévation Ouest 1:1000

Appartement
3 pièces

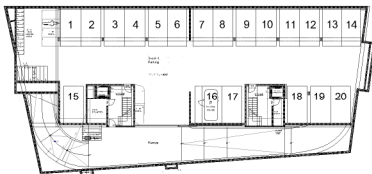
A15

1er
cave

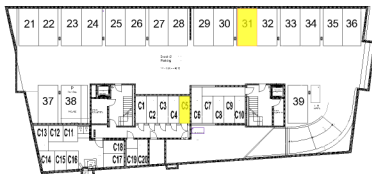
PPE Pondérée = 82 m²

Localisation	Surfaces
Communautaire	37.15 m ²
Chambre 1	12.75 m ²
Loggia	10.00 m ²

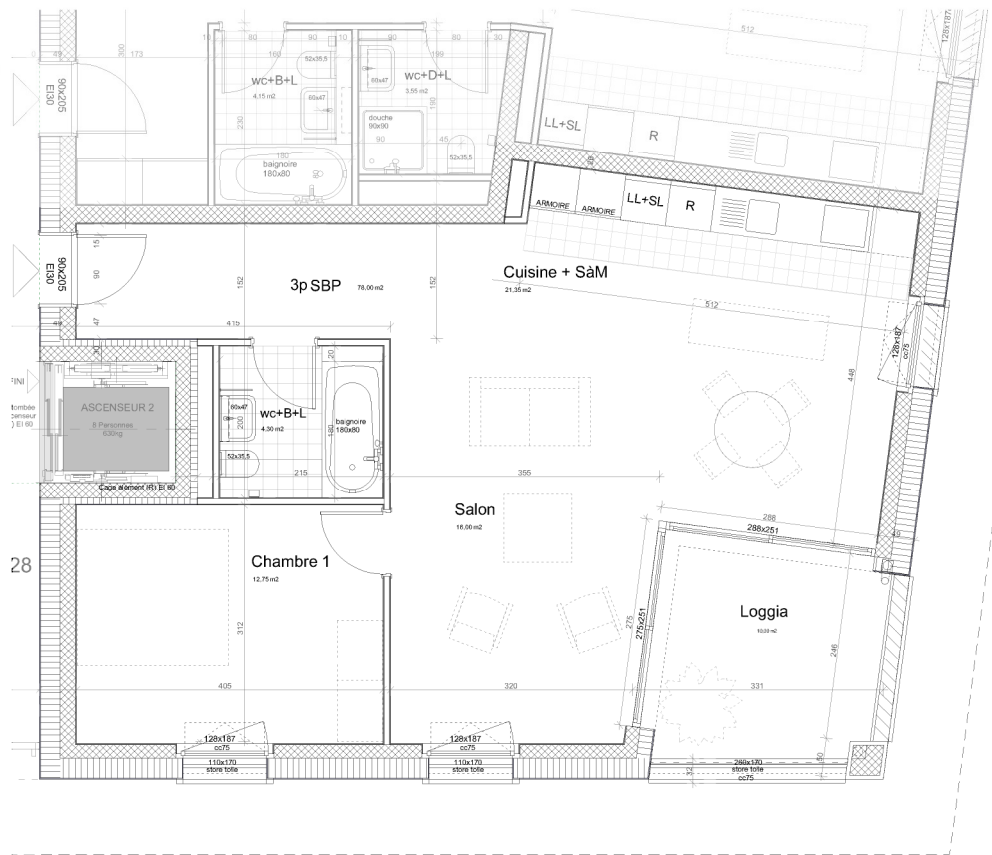
Parking Cave	No 31	SS-2
	No C5	5.15 m ²



1er sous-sol 1:1000



2ème sous-sol 1:1000



1er



Echelle en mètres