

# APPARTEMENTS



situation 1:1000



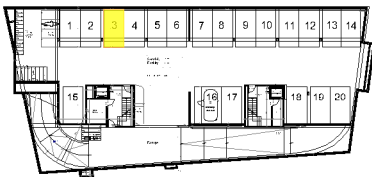
élévation Est 1:1000

Appartement  
2 pièces  
+ mezza  
2ème  
+ combles  
cave

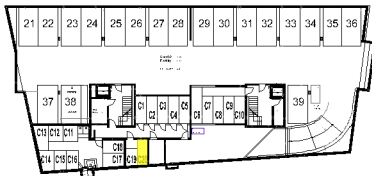
# A24

PPE Pondérée = 64 m<sup>2</sup>

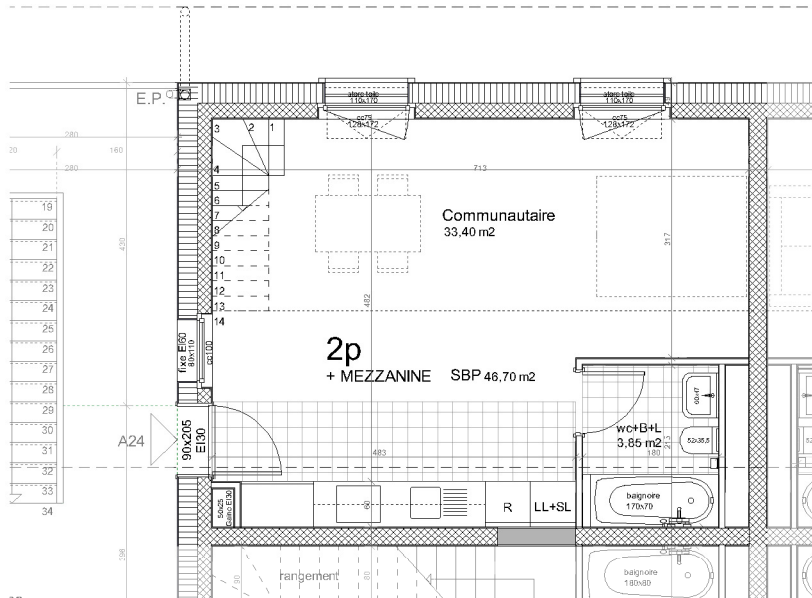
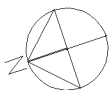
Localisation	Surfaces
Communautaire	33.40 m <sup>2</sup>
Mezzanine > 240	13.25m <sup>2</sup>
Mezzanine 240-180	7.00 m <sup>2</sup>
Mezzanine < 180	0.00m <sup>2</sup>
Parking Cave	No 3 SS-1 No C20 4.50 m <sup>2</sup>



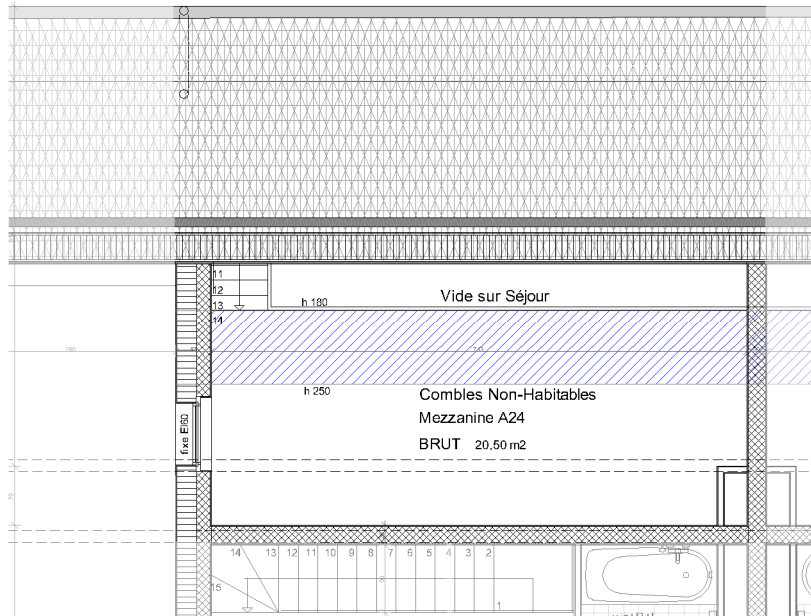
1er sous-sol 1:1000



2ème sous-sol 1:1000



2ème



comble