

APPARTEMENTS



situation 1:1000



élévation Est 1:1000

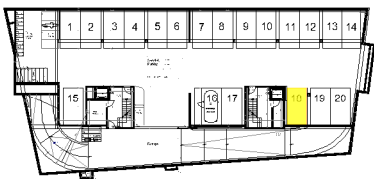
Appartement
2 pièces
+ mezza

A26

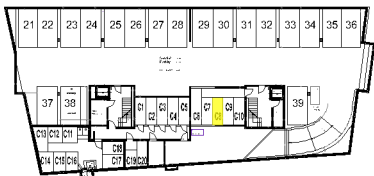
2ème
+ combles
cave

PPE Pondérée = 64 m²

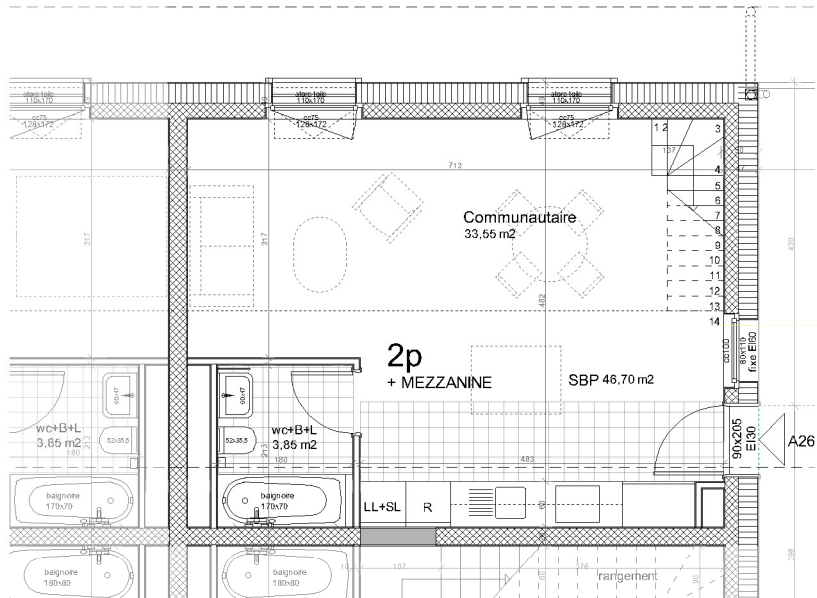
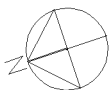
| Localisation | Surfaces |
|-------------------|---|
| Communautaire | 33.55 m ² |
| Mezzanine > 240 | 13.20 m ² |
| Mezzanine 240-180 | 7.00 m ² |
| Mezzanine < 180 | 0.00 m ² |
| Parking Cave | No 18 SS-1 No C8 5.15 m ² |



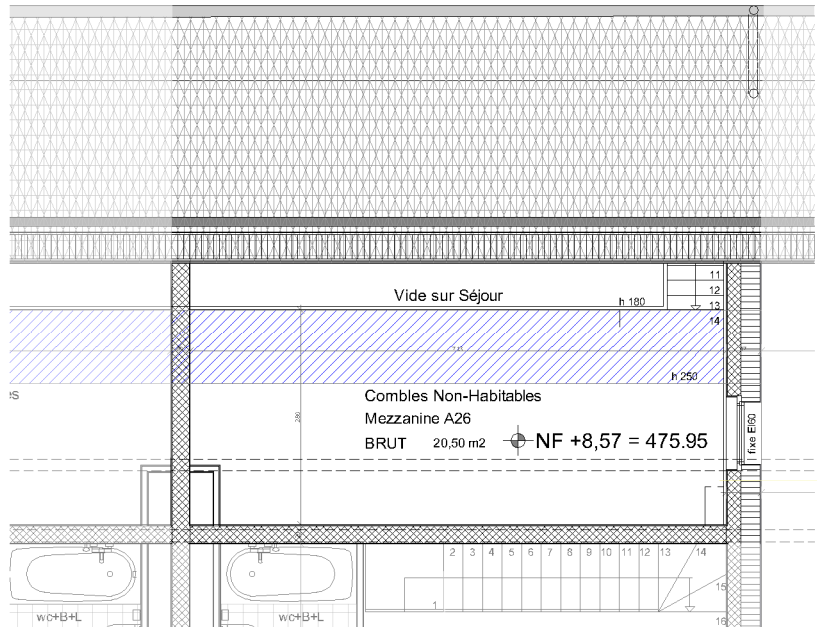
Parking 1er sous-sol 1:1000



2ème sous-sol 1:1000



2ème



comble