

APPARTEMENTS



situation 1:1000



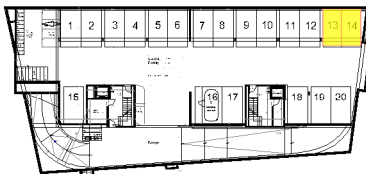
élévation Est 1:1000

Appartement
4 pièces
+ mezza
2ème
+ combles
cave

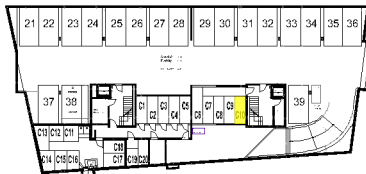
A28

PPE Pondérée = 133 m²

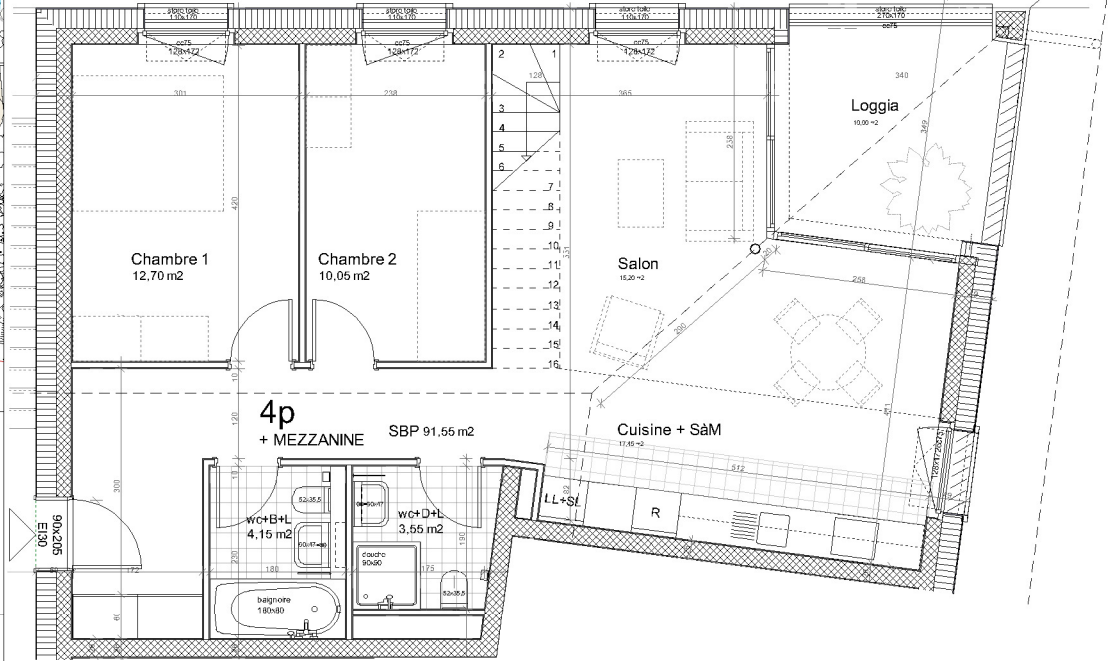
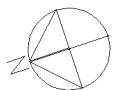
Localisation	Surfaces
Communautaire	32.65 m ²
Chambre 1	12.70 m ²
Chambre 2	10.05 m ²
Loggia	10.00 m ²
Mezzanine > 240	25.80 m ²
Mezzanine 240-180	7.50 m ²
Mezzanine < 180	6.30 m ²
Parking	No 13-14 SS-1
Cave	No C10 5.15 m ²



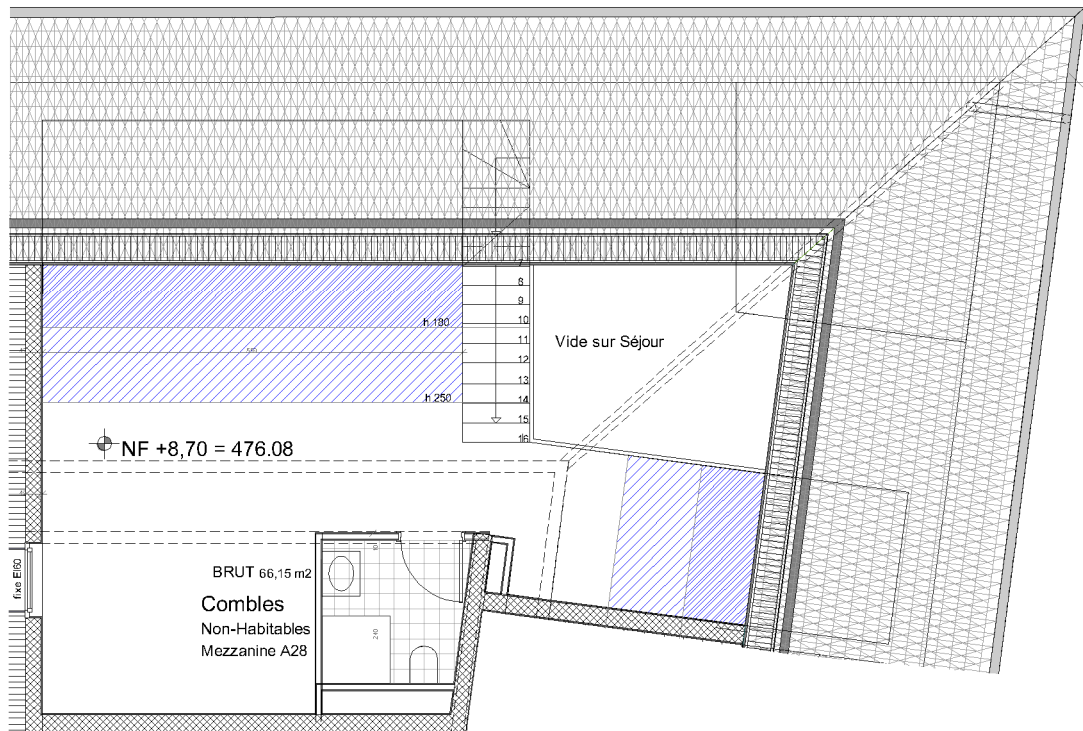
1er sous-sol 1:1000



2ème sous-sol 1:1000



2ème



comble